

Jakop Ahlbom Company
Amsterdam, the Netherlands
www.jakopahlbom.nl
+31-20-8950651
tech@jakopahlbom.nl

JAKOP
AHLBOM
COMPANY

“Lebensraum”

Technical rider

23-07-2018

Version 6 English

Premiere: 23 march 2012



Please carefully read this technical rider.
You are welcome to contact us with any questions or comments.

JAKOP AHLBOM

General information

Duration: 65 minutes

Intermission: none

Actors: 3 persons

Musicians: 2 persons

Crew: 3 technicians / 1 tourmanager

Contact:

Technical manager Jakop Ahlbom Company

Tom Vollebregt - tech@jakopahlbom.nl

Tour manager Jakop Ahlbom Company

Sarah-Faye van der Ploeg – productie@jakopahlbom.nl

Stage set

Important information!

Sightlines can be a problem, depending on the size and shape of the theatre! It is **not possible** to change the set to compensate for this! The section titled 'Description of stage set' includes a plan view of the set. **Appendices 1 and 2** contain examples illustrating the consequences caused by these limited sightlines.

Stage dimensions

- Proscenium opening: 10m (minimum)
- Stage width: 12m (minimum)
- Stage depth: 8m (minimum)
- Grid height: 6m (minimum)

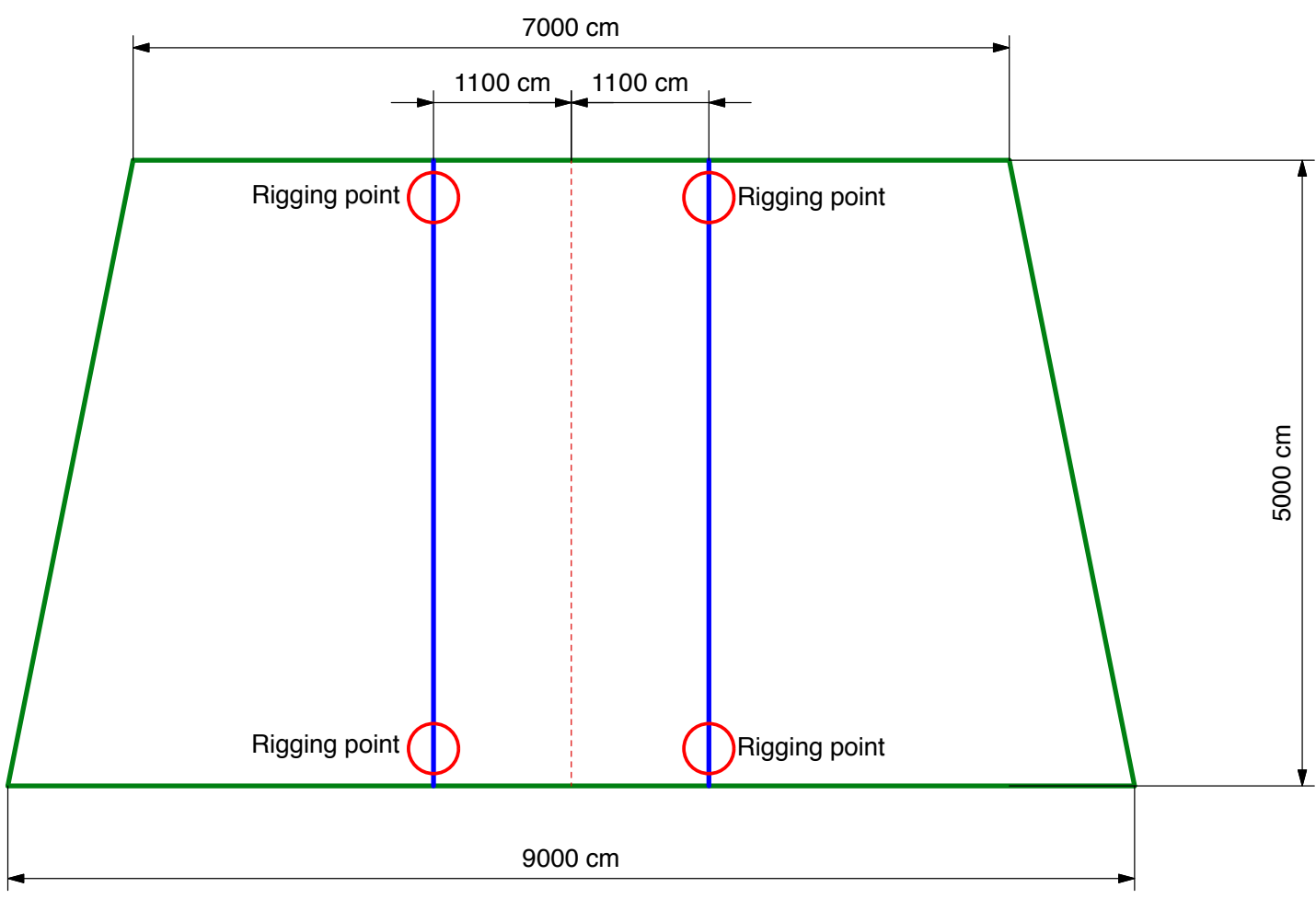
If any of the dimensions are lower than those listed above, please contact Yuri Schreuders as soon as possible. Solutions can be found in some cases.

Description of stage set

The set takes the form of a multifunctional room in which the entire play takes place. The room's floor plan is an isosceles trapezoid (**see figure 1**). It consists of two 5m-long side walls, a 7m-long rear wall, and a ceiling that fits exactly between the three walls. This ceiling is a metal construction with a white tulle as a roof. The front opening of the set is 9m wide and the room is 4m in height. A black masking flat is placed to the left and to the right of the set.

The ceiling hangs from two scenery fly bars. The first scenery fly bar hangs at 0.2m from the portal bridge and the second scenery fly bar hangs at 5.2m from the portal bridge. Additionally, a border at least 3m in height hangs from the first scenery fly bar. This fly bar weighs approximately 170kg **excluding** the weight of the border! The second scenery fly bar weighs approximately 140kg. The scenery is secured to the fly bars with two steel cables. These cables are located 1,1m to the left and 1,1m to the right of centre. In case there isn't any fly bar we can lift the ceiling with 4 chain hoists.

Figure 1



Rigging points can be moved at the blue line

Masking

Two borders of at least 3m in height hang from fly bar 1 (0.2m) and fly bar 2 (0.4m) hang in order to mask off the top of the scenery. Legs hang from fly bar 3 (0.6m), each 6.5m from centre stage. A single additional leg hangs in a fly bar (3.6 m) at 5m from the center only on stage right. An intermediate fond approximately 10m wide hangs at a fly bar (7m) and centre stage, immediately in front of the theatre's rear wall. We would like to use a red front curtain if available. Please hang all masking prior to the arrival of the technical crew. See **Appendix 3** for a masking plan.

Stage

We use the theatre's black ballet flooring. Preferably, it should be laid and secured prior to the arrival of the technical crew.

The stage should be completely clear on arrival of the technical crew (no dismantling activities or materials relating to any previous show)

Please send us digital photos and DWG/DXF technical drawings of the stage and of the auditorium.

Appendix 4 contains the grid plan.

Items supplied by the theatre:

Number	Item	Description
1	Genie lift (or comparable)	As high as the grid or to 8m
2	Fly bar for scenery	See grid plan
6	Fly bars for light	See grid plan
4	Fly bars for masking	See grid plan
Various	All masking elements	Black, as described
1	Front curtain	Red
1	Ballet flooring	Black
1	Prop table	Dimensions: 1m x 2m

WORLD POP ART

Special effects

The performance features two uses of a flash paper effect, which causes a small flame to fly through the air.

A very small amount of smoke is created.

Also, a candle is lit onstage using a match.

Depending on the system in place, any and all smoke and fire detectors should be switched off for the duration of the performance.

We also use a foam machine that pumps a limited amount of foam into the stage set

Logistics

Alles Voor De Kunsten has responsibility for transportation of the scenery. We will be using a truck that is 12m long, 4m high and 2.55m wide. The weight of the truck is 13,000kgs.

The truck will arrive at the theatre the day before the set is to be constructed. The precise time of arrival will be affected by the distance travelled and whether the play was performed elsewhere the previous day. As soon as we have more information about this, we will let you know. We would like to immediately park the truck at the loading dock. If this is not possible, please ensure there is a safe parking place nearby (with the relevant parking exemptions and/or permits if required).

Our driver does not sleep in the truck.

The technical crew usually travels by car. The actors and musicians travel together in a minibus, and will arrive sometime during the afternoon prior to the first (or only) performance.

Loading and unloading

The longest items we transport are 4m long and 1.7m high. These sections stand on a cart with wheels that is 4m long, 1.3m wide and 2.3m high. Please contact Yuri Schreuders immediately if you foresee anything preventing this cart being driven from the truck onto the stage or if it is necessary to use a lift to access the stage. Our truck is equipped with a hydraulic tailboard.

Lighting

The theatre will provide all necessary fittings and brackets, including hanging brackets, safety cables, filter frames, colour filters and related accessories. All profile spots should have 4 functioning blades, and all PC and Fresnel spots should have 4 functioning barn doors. The spots will be powered by the theatre's cables and dimmers. The auditorium house lights should be dimmable and should not spill onto the stage. The lighting operator sits next to the soundman in the auditorium.

Pre-hung grid lighting

All grid lighting should be hung and connected prior to the arrival of the technical crew. This will make it possible to build the set in a single day. Please see Appendices 5 and 6 for all the information and plans required for this. If you have any questions or it is impossible to pre-hang the light, please contact Yuri Schreuders immediately.

Items supplied by the Theatre for grid lighting

Number	Item	Notes
5	Profile spot 15-30 1kW	Or comparable zoom range
7	Fresnel 2kW	With barn doors
12	PC 1kW	With barn doors
6	Parcan CP62 medium flood 1kW	Six-bar also acceptable
30	2.3kW dimmers	
x	Colour filters inc. filter frame	See Appendices 5 and 6
5	Iris	For profile spot 15-30

Items supplied by the Theatre for floor lighting

Number	Item	Comments
2	Profile spot 25-50 2kW	Or comparable zoom range
2	Low floor stand	
2	Colour filters, inc. filter frame	Lee 711
3	240v fixed voltage	For sunstrips, 2.3kW per channel
1	32A high voltage power supply	CEE form 5pin. For Company's dimmer pack at rear of stage right
1	DMX 512	For Company's dimmer pack at rear of stage right

Items supplied by the Theatre for front of house (FOH) lighting

Number	Item	Comments
7	Profile spot 15-30 1kW	Or comparable zoom range
4	Profile spot $\leq 15\text{deg}$ 2kW	Or comparable zoom range
4	Profile spot 15-30 2kW	Or comparable zoom range
15	Dimmers 2.3kW	
x	Colour filters inc. filter frame.	See attached drawing
5	Iris	For Profile spot 15-30

Items supplied by the Company

Number	Item	Comments
Various	Lampshades	For use in set, inc. cables
1	12-channel dimmer pack	32A high voltage CEE Form 5 pin
7	Sunstrip	Inc. cables
1	Compulite Photon	Lighting console

Sound

We use the theatre's in-house sound system. This should be of good quality and suitable for the auditorium concerned. If there is no permanent sound system present, it should be installed and tested before our arrival.

The sound mixing desk will occupy a central position approximately two-thirds of the way from the stage to the rear of the auditorium. This position must not be under or on a balcony. If there is no permanent place for light and sound operators, seating will have to be blocked and removed. The operators' area is approximately 2.5m wide.

Items supplied by the Theatre

Number	Item	Comments
1	Sound system (PA)	Suitable for live band!
1	Multicable from left rear of stage to auditorium	4x send; 6x receive
1	Intercom system	FOH, 1x wireless on stage, at front curtain
1	16A single voltage sound group	Rear of stage left, shucko.

Items supplied by the Company

Number	Material	Comments
1	Sound mixing desk	Behringer X32 compact
4	Wireless microphones	3x belt pack, 1x handheld
1	Backline	Complete set. 4x monitor

Costumes

1 Dresser, supplied by Theatre

For each performance, we require a dresser to have ironed the costumes by no later than 90 minutes before curtain up. Following each performance, the costumes must be washed and dried so they can be packed in clean and dry. There are five costumes in total.

Dressing rooms

We require a total of three dressing rooms: two large dressing rooms for at least five people each and one smaller dressing room for at least two people.

All dressing rooms should be equipped with toilet, running water, tables, chairs, mirrors, make-up light and a key. We will also use the theatre's towels.

Schedule (set-up day)

Time	Department	Local crew	Comments	Additional notes
09:00- 13:00	Stagehands Set Light Sound	2 4 2 1	Unload truck Build set Check grid lighting / hang FOH Set up sound	'Stagehands' and 'Set' may be same crew.
14:00- 18:00	Set Light Sound	2 2 1	Build set Adjust / Set up floor lighting Set up sound	
17:00-18:00	Sound	1	Soundcheck	
18:00-20:00	Dresser	1	Ironing and pre-set	
19:00-20:30	Set Light Sound	1 1 1	Pre-set Pre-set Pre-set	
20:30-21:35	Set Light Sound	1 1 1	Show Show Show	No active function during performance
21:35- 00:00	Stagehands Set Light Sound Dresser	2 4 2 1 1	Load truck Break down set Break down light Break down sound Wash and dry costumes	Stagehands only required if the loading dock does not connect directly with the stage!

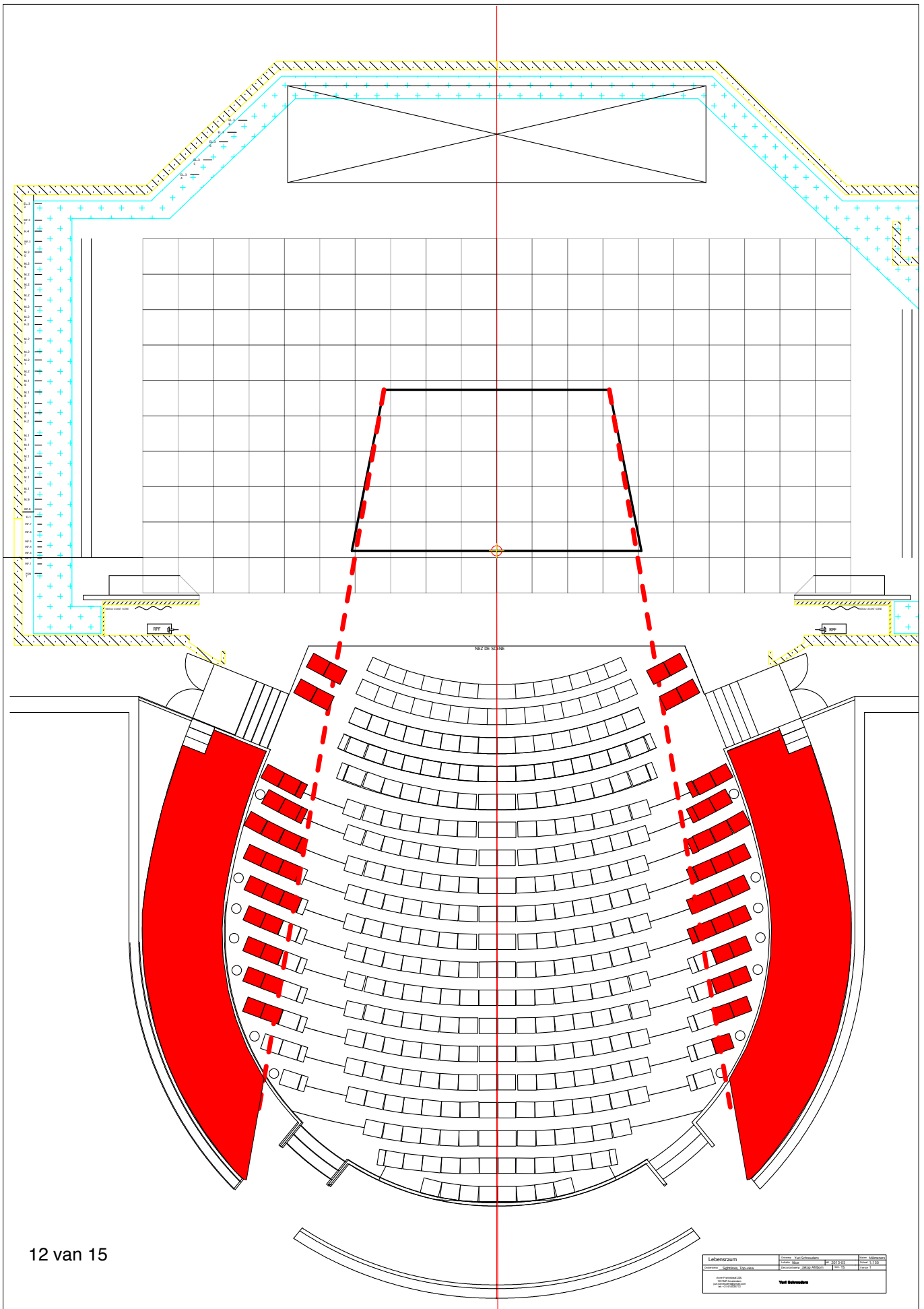
If performances are to take place on successive days in the same theatre, arrangements about what time to start work the following day will be made in consultation.

NB

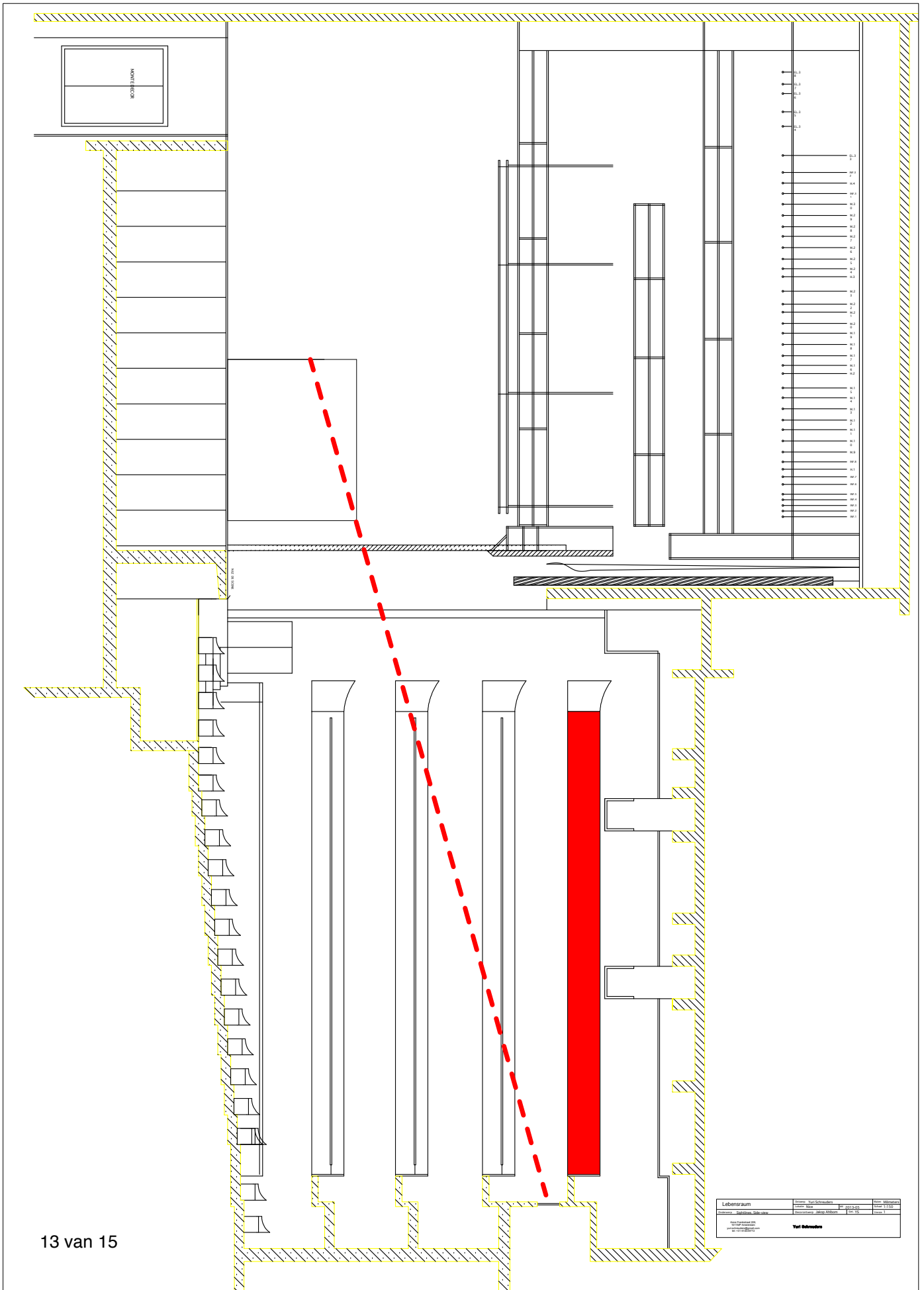
The technical crew speaks Dutch and English.

If curtain up is set for earlier than 20:30, it will be necessary to start setting up earlier. For example, a curtain up time of 20:00 will mean starting at 08:30 in the morning. It will also mean that the dresser will need to arrive half an hour earlier.

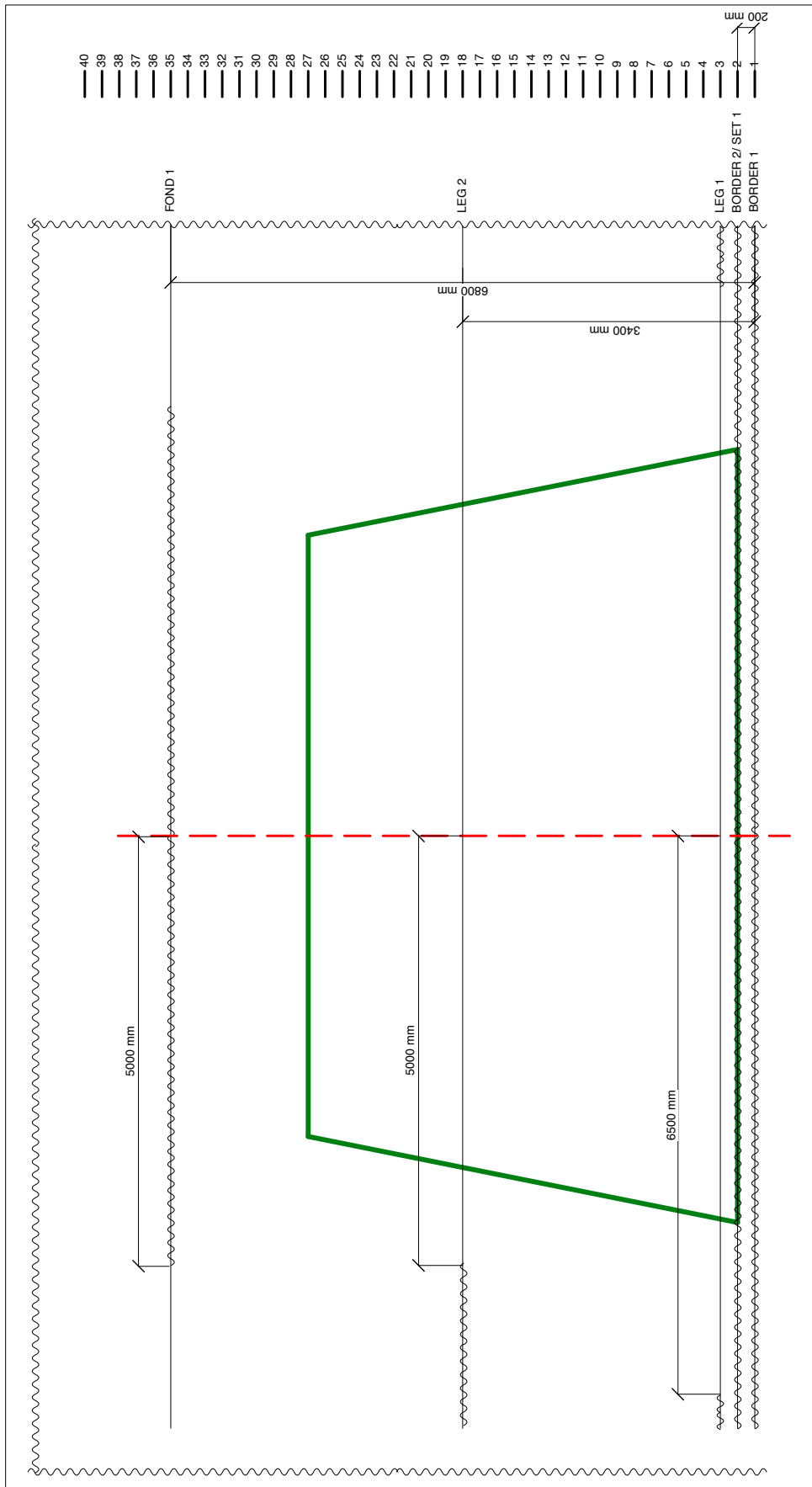
Appendix 1 Sightlines (example). Plan view.



Appendix 2 Sightlines (example). Side view.



Appendix 3 Masking Plan.

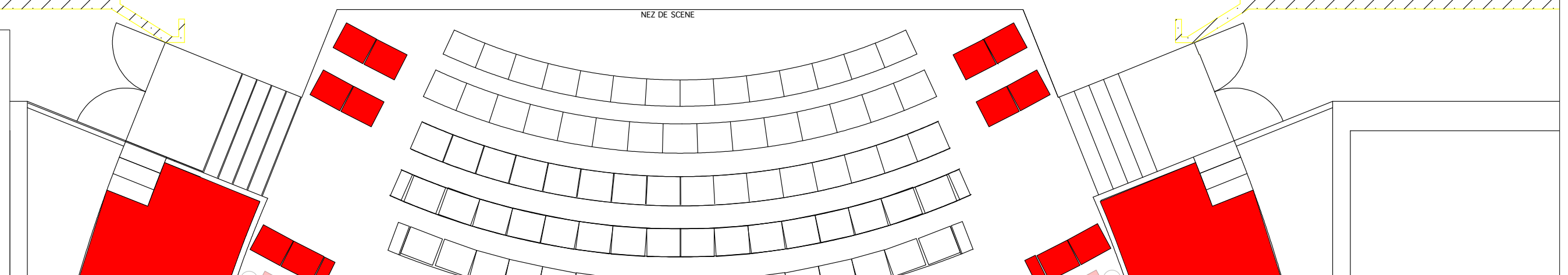
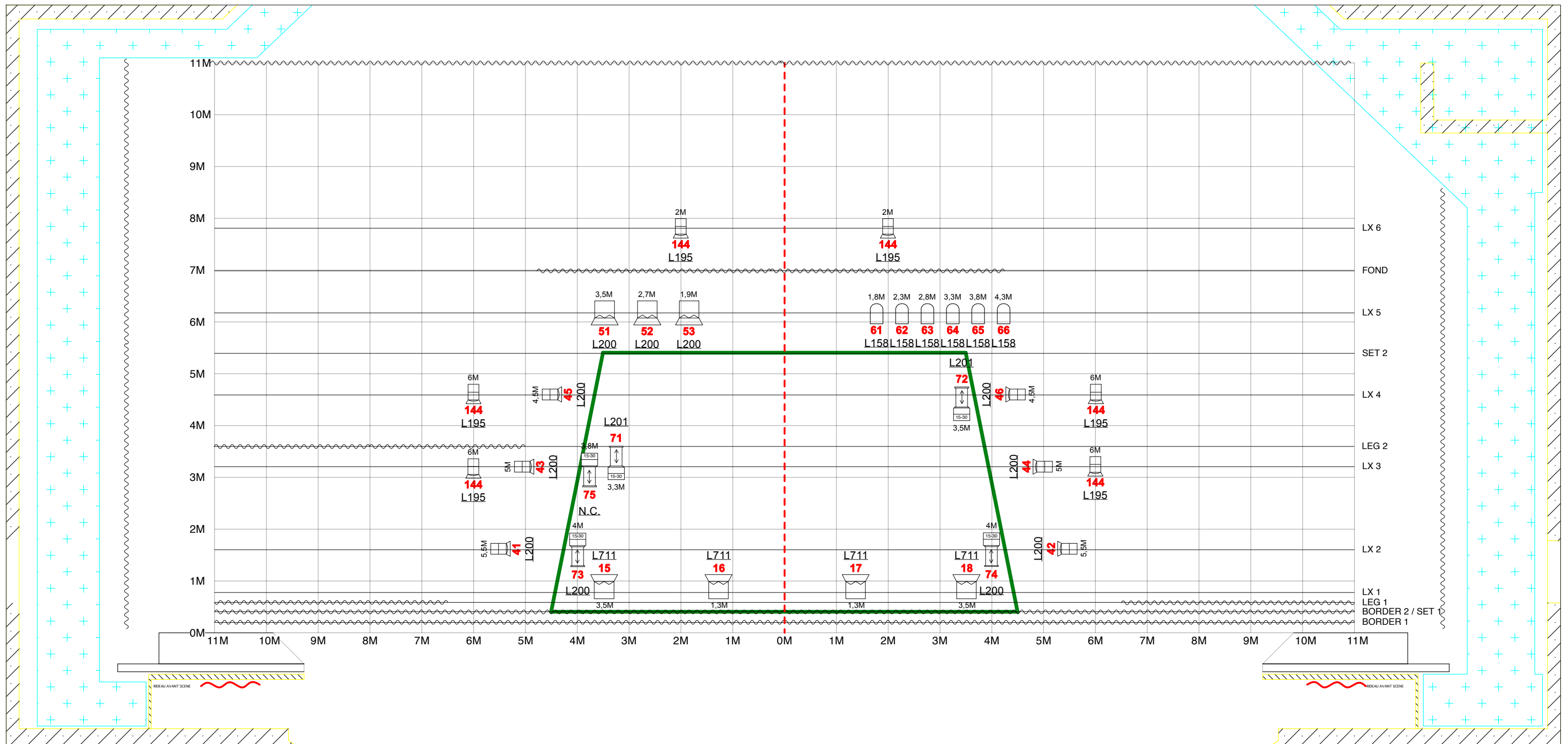


Lebensraum	Obwerp - Yuri Schreuders	Meter	Millimeters
Obwerp - Afstopping	Loose TOUR	Idr 2013-05	Schaal 1:50
	Bezoekgroep Jakob Ahlborn	Get. YS	Version 1
Yuri Schreuders Ave 8, Frijnsdijk 238 1011 MP Amsterdam yuri.schreuders@gmail.com			


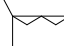


Appendix 4 Grid Plan.

JAKOP AHLBOM

Datum: 2013-05					
Productie: Lebensraum					
Bar	Distance from portal brige (cm)	What	Hight	Weight (Kg)	Remark
	-150	Front curtain			Preferable red.
1	20	Border 1			Border with a minimum hight of 3 meter.
2	40	Border 2 / Set 1		170 Ex. Border	Border with a hight of 3 meter.
3	60	Leg			6,5 meters from center to end of the bar.
4	80	LX 1	7 meter		
5	100				
6	120				
7	140				
8	160	LX 2	6,5 meter		
9	180				
10	200				
11	220				
12	240				
13	260				
14	280				
15	300				
16	320	LX 3	6,5 meter		
17	340				
18	360	Leg			Only on stage right! Starts at 5 meter from center.
19	380				
20	400				
21	420				
22	440				
23	460	LX 4	6,5 meter		
24	480				
25	500				
26	520				
27	540	Set 2		140	
28	560				
29	580				
30	600				
31	620	LX 5	7 meter		
32	640				
33	660				
34	680				
35	700	Intermediate Fond			10 meter wide, in the center of the bar.
36	720				
37	740				
38	760				
39	780	LX 6	6 meter		
40	800				




Instruments

-  PC 1kW 12X
-  Fresnel 2kW 7X
-  Zoom Profile 15-30 1kW 5X
-  Parcan 64 1kW Cp-62 6X

Legend

Color Channel



Distance from centre point

Lebensraum		Ontwerp Yuri Schreuders	Maten Milimeters
Lokatie Tour		dd 2017-06	Schaal 1:75
Onderwerp Lightdesign. Stage A3	Decorontwerp Jakob Ahlbom	Get. YS	Versie 6
Anne Frankstraat 226, 1011MP Amsterdam tel: +31 614035772 yuri.schreuders@gmail.com		Yuri Schreuders	

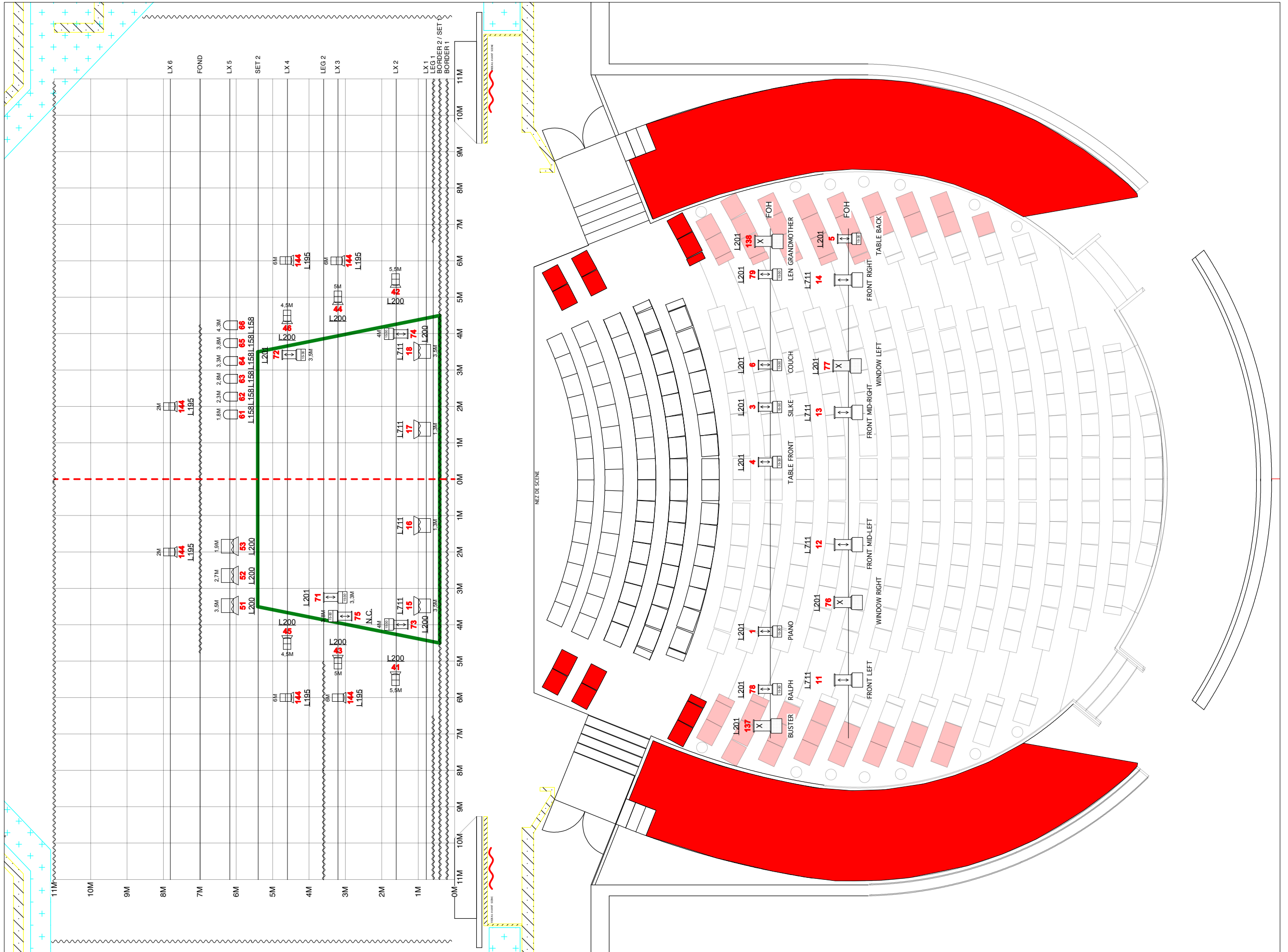
Instruments

- Zoom Profile 15-30 2kW 4X
- Profile Spot ≤15Deg 2kW 4X
- Zoom Profile 15-30 1kW 7X

Legend

Color Channel

Distance from centre point



Lebensraum	Ontwerp Yuri Schreuders	Maten Millimeters
Onderwerp Lightdesign. FOH A3	Lokatie Tour dd 2017-06	Schaal 1:100
	Decorontwerp Jakop Ahlbom	Get. YS
		Versie 6
Anne Frankstraat 226, 1011MP Amsterdam tel: +31 614035772 yuri.schreuders@gmail.com		Yuri Schreuders

CHANNEL HOOKUP

Lebensraum_lightdesign_vs5

Chan	Dimmer	Position	Purpose	Color	Instrument Type	Watt
(1)		FOH-1	PIANO	L201	Profile spot 15-30	1kw
(3)		FOH-1	SILKE	L201	Profile spot 15-30	1kw
(4)		FOH-1	TABLE FRONT	L201	Profile spot 15-30	1kw
(5)		FOH-2	TABLE BACK	L201	Profile spot 15-30	1kw
(6)		FOH-1	COUCH	L201	Profile spot 15-30	1kw
(11)		FOH-2	FRONT LEFT	L711	Profile spot 15-30	2kw
(12)		FOH-2	FRONT MID-LEFT	L711	Profile spot 15-30	2kw
(13)		FOH-2	FRONT MID-RIGHT	L711	Profile spot 15-30	2kw
(14)		FOH-2	FRONT RIGHT	L711	Profile spot 15-30	2kw
(15)		LX 1	FRONT 2 MID-LEFT	L711	Fresnel	2kw
(16)		LX 1	FRONT 2 LEFT	L711	Fresnel	2kw
(17)		LX 1	FRONT 2 RIGHT	L711	Fresnel	2kw
(18)		LX 1	FRONT 2 MID-RIGHT	L711	Fresnel	2kw
(31)		FLOOR	RIGHT WALL	L711	Profile spot 25-50	2kw
(32)		FLOOR	LEFT WALL	L711	Profile spot 25-50	2kw
(41)		LX 2	SIDE LEFT 1	L200	PC	1kw
(42)		LX 2	SIDE RIGHT 1	L200	PC	1kw
(43)		LX 3	SIDE LEFT 2	L200	PC	1kw
(44)		LX 3	SIDE RIGHT 2	L200	PC	1kw
(45)		LX 4	SIDE LEFT 3	L200	PC	1kw
(46)		LX 4	SIDE RIGHT 3	L200	PC	1kw
(51)		LX 5	BACKLIGHT LEFT	L200	Fresnel	2kw
(52)		LX 5	BACKLIGHT MID	L200	Fresnel	2kw
(53)		LX 5	BACKLIGHT RIGHT	L200	Fresnel	2kw
(61)		LX 5	BACKLIGHT	L158	Parcan CP-62 Medium flood	1kw
(62)		LX 5	BACKLIGHT	L158	Parcan CP-62 Medium flood	1kw
(63)		LX 5	BACKLIGHT	L158	Parcan CP-62 Medium flood	1kw
(64)		LX 5	BACKLIGHT	L158	Parcan CP-62 Medium flood	1kw
(65)		LX 5	BACKLIGHT	L158	Parcan CP-62 Medium flood	1kw
(66)		LX 5	BACKLIGHT	L158	Parcan CP-62 Medium flood	1kw
(71)		LX 3	SPECIAL PIANO	L201	Profile spot 15-30	1kw
(72)		LX 4	SPECIAL COUCH	L201	Profile spot 15-30	1kw
(73)		LX 2	SPECIAL LEN	L200	Profile spot 15-30	1kw
(74)		LX 2	SPECIAL RALPH	L200	Profile spot 15-30	1kw
(75)		LX 3	SPECIAL FLOWER	N.C.	Profile spot 15-30	1kw
(76)		FOH-2	WINDOW RIGHT	L201	Profile spot ≤ 15Deg	2kw
(77)		FOH-2	WINDOW LEFT	L201	Profile spot ≤ 15Deg	2kw
(78)		FOH-1	FRONT RALPH	L201	Profile spot 15-30	1kw
(79)		FOH-1	FRONT LEN	L201	Profile spot 15-30	1kw
(137)		FOH-1	BUSTER	L201	Profile spot ≤ 15Deg	2kw
(138)		FOH-1	GRANDMOTHER	L201	Profile spot ≤ 15Deg	2kw
(144)		LX 3	BACKSTAGE	L195	PC	1kw
		LX 3	BACKSTAGE	L195	PC	1kw
		LX 4	BACKSTAGE	L195	PC	1kw
		LX 4	BACKSTAGE	L195	PC	1kw
		LX 6	BACKSTAGE	L195	PC	1kw
		LX 6	BACKSTAGE	L195	PC	1kw

INSTRUMENT SCHEDULE

Lebensraum_lightdesign_vs5

FOH-1

Ch	Purpose	Instrument Type & Accessory & Wattage	Color
(137)	BUSTER	Profile spot ≤ 15Deg 2kw	● L201
(78)	FRONT RALPH	Profile spot 15-30+Diaphragme 1kw	● L201
(1)	PIANO	Profile spot 15-30+Diaphragme 1kw	● L201
(4)	TABLE FRONT	Profile spot 15-30 1kw	● L201
(3)	SILKE	Profile spot 15-30 1kw	● L201
(6)	COUCH	Profile spot 15-30+Diaphragme 1kw	● L201
(79)	FRONT LEN	Profile spot 15-30+Diaphragme 1kw	● L201
(138)	GRANDMOTHER	Profile spot ≤ 15Deg+Diaphragme 2kw	● L201

FOH-2

Ch	Purpose	Instrument Type & Accessory & Wattage	Color
(11)	FRONT LEFT	Profile spot 15-30 2kw	● L711
(76)	WINDOW RIGHT	Profile spot ≤ 15Deg 2kw	● L201
(12)	FRONT MID-LEFT	Profile spot 15-30 2kw	● L711
(13)	FRONT MID-RIGHT	Profile spot 15-30 2kw	● L711
(77)	WINDOW LEFT	Profile spot ≤ 15Deg 2kw	● L201
(14)	FRONT RIGHT	Profile spot 15-30 2kw	● L711
(5)	TABLE BACK	Profile spot 15-30 1kw	● L201

LX 1

Ch	Purpose	Instrument Type & Accessory & Wattage	Color
(15)	FRONT 2 MID-LEFT	Fresnel+Barndoorns 2kw	● L711
(16)	FRONT 2 LEFT	Fresnel+Barndoorns 2kw	● L711
(17)	FRONT 2 RIGHT	Fresnel+Barndoorns 2kw	● L711
(18)	FRONT 2 MID-RIGHT	Fresnel+Barndoorns 2kw	● L711

LX 2

Ch	Purpose	Instrument Type & Accessory & Wattage	Color
(41)	SIDE LEFT 1	PC+Barndoorns 1kw	● L200
(73)	SPECIAL LEN	Profile spot 15-30 1kw	● L200
(74)	SPECIAL RALPH	Profile spot 15-30 1kw	● L200
(42)	SIDE RIGHT 1	PC+Barndoorns 1kw	● L200

LX 3

Ch	Purpose	Instrument Type & Accessory & Wattage	Color
(144)	BACKSTAGE	PC+Barndoorns 1kw	● L195
(43)	SIDE LEFT 2	PC+Barndoorns 1kw	● L200
(75)	SPECIAL FLOWER	Profile spot 15-30+Diaphragme 1kw	N.C.
(71)	SPECIAL PIANO	Profile spot 15-30 1kw	● L201
(44)	SIDE RIGHT 2	PC+Barndoorns 1kw	● L200
(144)	BACKSTAGE	PC+Barndoorns 1kw	● L195

INSTRUMENT SCHEDULE

Lebensraum_lightdesign_vs5

LX 4

Ch	Purpose	Instrument Type & Accessory & Wattage	Color
(144)	BACKSTAGE	PC+Barndoorns 1kw	L195
(45)	SIDE LEFT 3	PC+Barndoorns 1kw	L200
(72)	SPECIAL COUCH	Profile spot 15-30 1kw	L201
(46)	SIDE RIGHT 3	PC+Barndoorns 1kw	L200
(144)	BACKSTAGE	PC+Barndoorns 1kw	L195

LX 5

Ch	Purpose	Instrument Type & Accessory & Wattage	Color
(51)	BACKLIGHT LEFT	Fresnel+Barndoorns 2kw	L200
(52)	BACKLIGHT MID	Fresnel+Barndoorns 2kw	L200
(53)	BACKLIGHT RIGHT	Fresnel+Barndoorns 2kw	L200
(61)	BACKLIGHT	Parcan CP-62 Medium flood 1kw	L158
(62)	BACKLIGHT	Parcan CP-62 Medium flood 1kw	L158
(63)	BACKLIGHT	Parcan CP-62 Medium flood 1kw	L158
(64)	BACKLIGHT	Parcan CP-62 Medium flood 1kw	L158
(65)	BACKLIGHT	Parcan CP-62 Medium flood 1kw	L158
(66)	BACKLIGHT	Parcan CP-62 Medium flood 1kw	L158

LX 6

Ch	Purpose	Instrument Type & Accessory & Wattage	Color
(144)	BACKSTAGE	PC+Barndoorns 1kw	L195
(144)	BACKSTAGE	PC+Barndoorns 1kw	L195

FLOOR

Ch	Purpose	Instrument Type & Accessory & Wattage	Color
(31)	RIGHT WALL	Profile spot 25-50 2kw	L711
(32)	LEFT WALL	Profile spot 25-50 2kw	L711